

# KWAKHA INCHUBOMGOMO YELULWIMI LWESIKOLWA

Incwajana 3

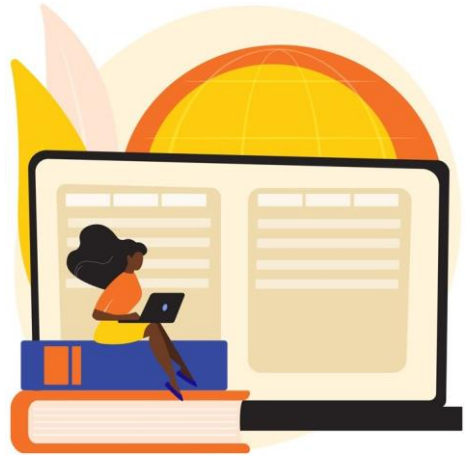
Mabasa  
2024

Lencwajana iyatfolakala ngeSivenda, Scho-  
sa, Sipedu, Sizulu, Sisutfu, Sibhunu, Sitswa-  
na, Sitsonga, Siswati, Sindebele, Lulwimi  
Lwetimphawu kanye neSingisi.

Tfola iminingwane lebanti ku [www.bua-lit.org.za](http://www.bua-lit.org.za).

## Iyini inchubomgomo yelulwimi Lwesikolwa?

Inchubomgomo yelulwimi yesikolwa ngumculu lobeka kutsi ngutiphi tilwimi letisetjentiswako emisebentini leyehlukene yesikolwa lefana nekufundzisa, kufundza, kuhlola, imisebenti yangaphandle kanye nekuphatsa. Iniketa ticondziso tekutsi bantfu labakhuluma tilwimi letehlukene esikolweni batawuhlonishwa kanjani. Inchubomgomo yelulwimi yesikolwa ibuka kufundza, kufundzisa kwesikolwa kanye nekuhlola tinsitakufundza (ema-LTMS) nekutsi tingasetjentiswa kanjani kute kutfutukiswe emakhono ebantfwana ekukhuluma, kuvisisa, kufundza kanye nekubhala ngetilwimi letingetulu kwalunye. Iniketa tinyatselo letisebentako tekutsi timiso letisisekelo tekufundzisa ngetilwimi letimbili nobe ngetilwimi letinyenti tingasetjentiswa kanjani esikolweni futsi ihamba neluhlelo lwekusebenta lwekuyiphumelelisa.



## Yini lecuketfwe yinchubomgomo yelulwimi lwesikolwa?

Inchubomgomo yelulwimi lwesikolwa ifanele isho kutsi: lulwimi/tilwimi lwesikolwa lufanele kutsi lwentiwe ligugu kanjani; lulwimi/tilwimi lwekufundza, kufundzisa kanye nekuhlola (i-LOLTA/ema-LOLTA) ngutiphi tilwimi letifanele kutsi tifundziswe njengetifundvo, futsi kuliphi lizinga/emazinga; nekutsi futsi ngutiphi tilwimi letisetjentiselwa kuchumana kwangekhatsi nekwangaphandle. Lenchubomgomo ifanele kutsi income indlela yokusebentisa lulwimi esikolweni, njengekuhlanganisa emaklasi lamabili kanye/nobe lahambisanako lasemkhatsini, nobe bulwimimbili/bulwiminyenti lobugucugucukako. Ifanele futsi kutsi inikete luhlu lwetinsitakufundza telulwimi lwesikolwa njengetincwadzi tasemtapolwati, tikhungo temitfombolusito kanye nemitfombolusito lebantfu, iphindze iphakamise kutsi ingasetjentiswa kanjani ngalokuyiphumelelo.

## Kungani kubalulekile kuba nenchubomgomo yelulwimi lwesikolwa?

Tonkhe tikolwa tifanele kutsi tibe nenchubomgomo yelulwimi. Lenchubo yekwakha inchubomgomo yelulwimi ikhutsata kucabanga lokuchubekako mayelana nendlela yokufundza, yokufundzisa kanye nekuhlola ngendlela lenenjongo. Iniketa sisekelo sekwakha budlelwane lobuhle emkhatsini webantfwana nabothishela. Inchubomgomo yelulwimi yenta kancono likhono lesikolwa lekwenza kancono kusebenta kwaso konkhe, kuphela-nje uma ngabe lulwimi lwasekhaya lwemfundzi lufakiwe eluhlelweni lwetemfundvo (kukharikhulamu). Iphindze futsi iletsa luntjintjo loluhle kutemfundvo nakutenhlalo esikolweni ngobe simo semfundvo sifaka ekhatsi konkhe futsi semukela bantfu ngekwehlukahlukana kwabo.

## Inchubomgomo yelulwimi lwesikolwa yakhiwa kanjani?

Kwakha inchubomgomo yelulwimi lwesikolwa kuyinchubo ledzinga kutsi kuboniswane nebatali, bothishela, batali kanye nebefundzi mayelana netilwimi letitawusetjentiswa ekufundziseni, ekufundzeni, ekuhloleni kanye nasemisebentini yangaphandle. Lokubonisana kufanele kutsi kwakhe lubumbano lolunenjongo emmangweni wesikolwa, kufaka ekhatsi, emkhatsini walokunye, batali nabothishela. Kufaka ekhatsi kucabanga ndzawonye ngetimongcondvo tetilwimi, tinkholelo kanye nalokwentiwako; kutfola emaciniso kute kutfolakale kutsi lulwimi lusetjentiswa kanjani emmangweni kanye nekwatisa batali, bothishela kanye nebefundzi kanye nekucaphelisa ngekubaluleka nebhule bekusebentisa kanye nekufundza tilwimi letimbili noma letinengi. Kwakha inchubomgomo yelulwimi lwesikolwa kufaka ekhatsi kutsatsa tincumo mayelana nekutsi bantfwana batawutfufuka kanjani ngekwebulwiminyenti kanye nekwakha umbonochanti wesikolwa mayelana nekutsi kusetjentiswa kwetilwimi kungalifaka kanjani ligalelo kutemfundvo lenguyonayona. Lenchubomgomo idzinga kwakhiwa, kwemukelwa, kusetjentiswa, kulandzelelwa kanye nekubuyeketwa lokuchubekako.

## Ngubani lobandzakanyekako ekwakheni inchubomgomo yelulwimi lwesikolwa?

Ema-SGB (emabandla langamele tikelwa) adzingwa ngumtsetfo kutsi akhe inchubomgomo letfutufukisa kusetjentiswa kwetilwimi letinyenti. Batali bayahlanganyela ekutsatfweni kwetincumo. Bothishela kanye naletinye tingcweti batjela ummango ngebubanti bawo ngekubaluleka kwekufundza ngetilwimi letimbili/letinyenti, kufaka ekhatsi imfundvo lemiselwe elulwimi lwasekhaya/lwelibele (i-MTBBE). Bothishela ngibo labahamba embili kakhulu ekusetjentisweni kwenchubomgomo kanye nekwetfulwa kwekharikhulamu. Baphatsi besikolwa kanye/nobe i-SGB kufanele bahlanganise badlalindzima labehlukene kute bacoce ngetinchubo nemisebenti leyehlukene.



## Nguwuphi umehluko longentiwa yinchubomgomo yelulwimi emmangweni wesikolwa?

Inchubomgomo yelulwimi lwesikolwa ingaholela embonweni lofanako kubatali, bothishela kanye nebefundzi mayelana nendzima yelulwimi ekufundzeni kanye nakumbobonchanti wekusebentisa tinsitakufundza telulwimi letinyenti. Ingaphucula kwati kubhala nekufundza kwebantfwana bese iholela emazingeni laphakeme ekutetsamba kwebafundzi. Lenchubomgomo kufanele iholele emazingeni laphakeme enhlonipho kubantfu labehlukene labakhuluma tilwimi tasekhaya/telibele kanye nemoya lomuhle wekwhlanganyela kuwo onkhe emacembu lanenshisekelo lakhona esikolweni.

Sibonga i-PRAESA ngemvume yabo yekutsi kuphindze futsi kusetjentiswe lokucuketfwe eluchungechungeni lwetincwajana lwanga-2008. Sibonga i-Zenex Foundation ngekwenza lomkhicito waletincwajana ube yimphumelelo.

Ilungiselelwe nguSoraya Abdulatief, Xolisa Guzula, Ntombizanele Mahobe, Carolyn McKinney, Nadeema Musthan, Margie Probyn, Brian Ramadiro, Robyn Tyler naZola Wababa.

Ikhava idizayinywe nguPhumle April.  
Idizayinwe Bonjingalwati BaseFort Hartley Brand Consultants.

Translated by Bongive Khumalo.

**ZENEX**  
FOUNDATION



**bu-a-lit**  
language and  
literacy collective